

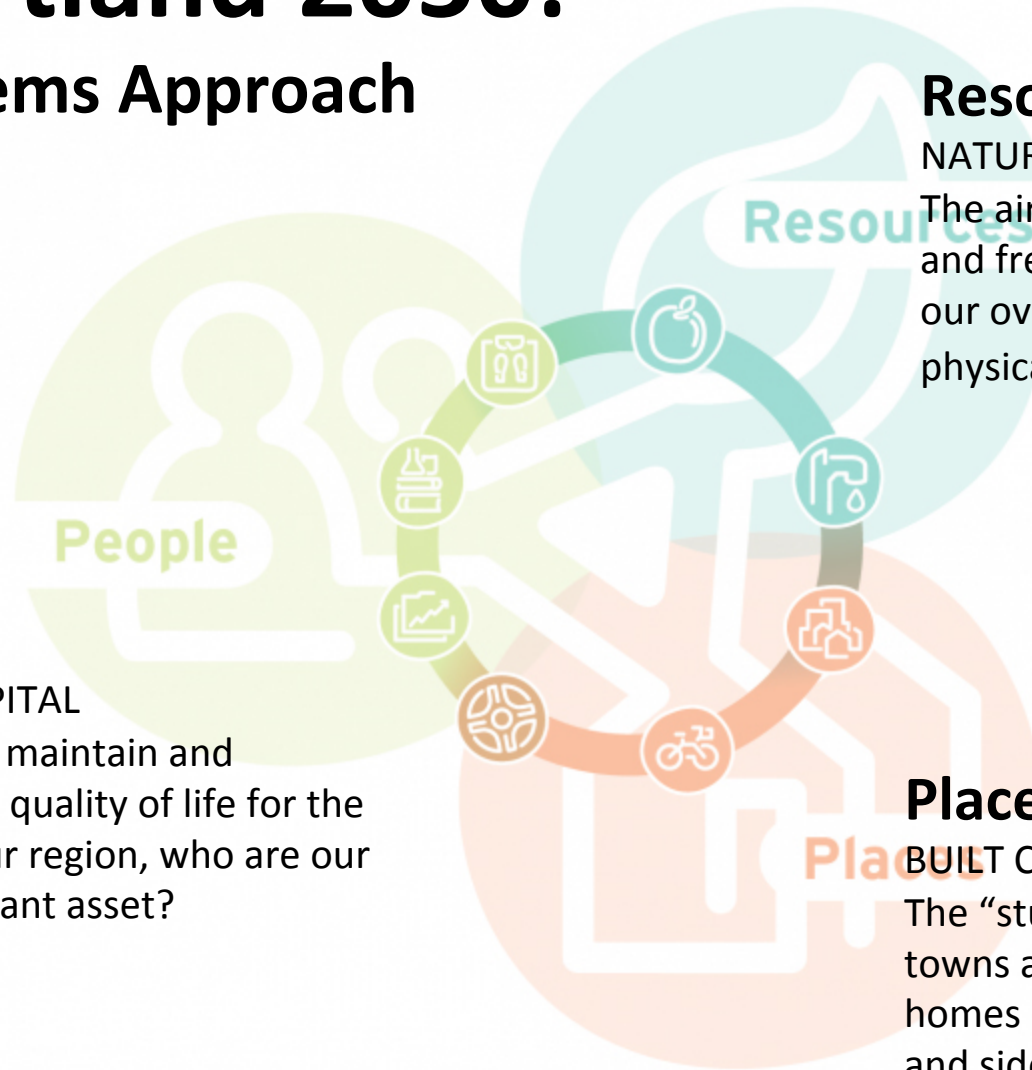
Heartland

Growing responsibly.
Together. **2050**



Heartland 2050:

A Systems Approach



People

HUMAN CAPITAL

How can we maintain and enhance the quality of life for the people of our region, who are our most important asset?

Resources

NATURAL CAPITAL

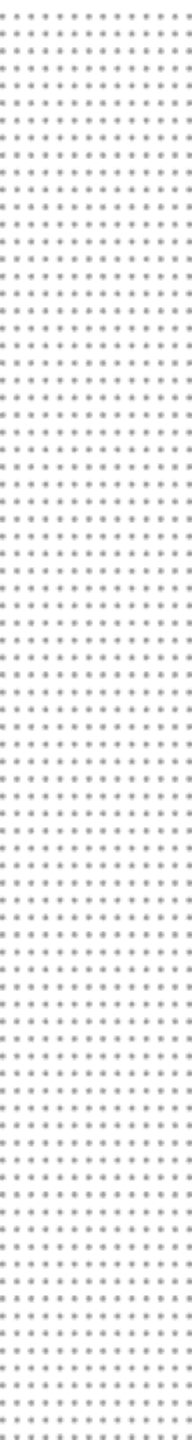
The air we breathe, the land, and fresh water sources affect our overall health and the physical landscape.

Places

BUILT CAPITAL

The “stuff” from which our towns and cities are made – homes and buildings, streets and sidewalks, bridges, power and water utilities – all make up the built environment of our region.



- 
- A decorative vertical grid pattern of small dots is located on the left side of the slide.
- Equity & Engagement Committee
 - Values Forums
 - Equitable Growth Profile
 - Outreach vs. Co-Creating a Plan
 - Leadership Development
 - Refugee Workshop

Fair Housing & Equity Assessment

Omaha-Council Bluffs Transit Service Frequency

Frequency of service
at PM peak

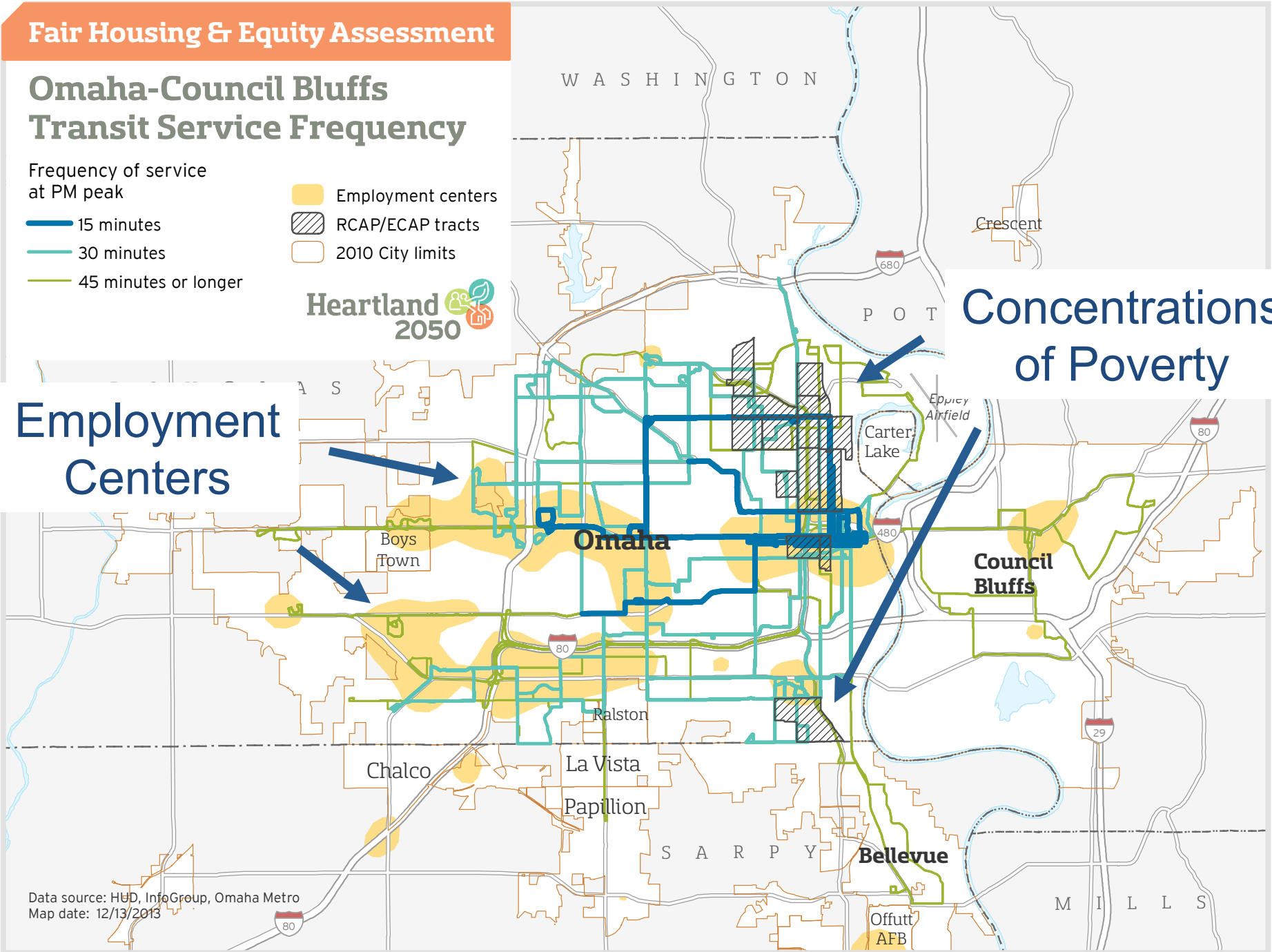
- 15 minutes
- 30 minutes
- 45 minutes or longer

- Employment centers
- RCAP/ECAP tracts
- 2010 City limits



Employment
Centers

Concentrations
of Poverty



Data source: HUD, InfoGroup, Omaha Metro
Map date: 12/13/2013

Citizens Advisory Committee

- Best practice (not required)
- Raised our level of public input
- Transition from transportation planning 101 to work on their own
- Citizens Academy for Omaha's Future

Coordinated Transit Committee

- 8 year old committee
- Select/approve 5310 projects
- Built scoring rubric, review applications
- Develop/maintain coordinated transit plan
- Transition to help create one-call center coordination